



# More Precision

**thermoMETER** // Non-contact infrared temperature sensors





### thermoMETER CTM2

Miniaturized temperature sensor with 1.6  $\mu\text{m}$  measuring wavelength

- Measuring range from 250 °C to 1600 °C
- Up to 125 °C ambient temperature without cooling
- For metal processing such as welding, soldering, forming, sintering and for measurements of metal oxides and ceramics
- Extended compensation for measuring errors using short measuring wavelength (e.g. with emissivity changes or misadjustment)
- High compatibility with electromagnetic fields e.g. with induction welding
- Compact sensor for installation in confined spaces
- Selectable and scalable analog output, optional digital interfaces

#### Optical specifications thermoMETER CTM2

□ = smallest spot size / focal point (mm)

Standard Focus										
2SF40	40:1	6.5	10.7	14.9	19.1	23.3	27.4	31.6	35.8	40
2SF75	75:1	6.5	8.4	10.2	12.1	13.9	15.8	17.6	19.5	21.3
	distance in mm	0	200	400	600	800	1000	1200	1400	1600
Close Focus (integrated CF lens)										
2CF40	40:1	6.5	4.4	2.7	6	10.2	14.4	18.6	22.8	27
2CF75	75:1	6.5	3.8	1.5	4.4	8	11.7	15.3	19	22.6
	distance in mm	0	60	110	150	200	250	300	350	400

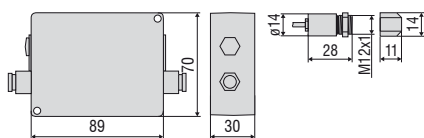
Model	CTM-2SF40-C3	CTM-2SF75-C3
Optical resolution	40:1	75:1
Temperature range <sup>1)</sup>	250 to 800 °C	385 to 1600 °C
Spectral range	1.6 μm	
System accuracy <sup>2), 3)</sup>	± (0.3 % of reading + 2 °C)	
Repeatability <sup>2)</sup>	± (0.1 % of reading + 1 °C)	
Temperature resolution	0.1 °C	
Response time <sup>4)</sup>	1 ms (90 %)	
Emissivity/gain <sup>1)</sup>	0.100 to 1.100	
Transmissivity/gain <sup>1)</sup>	0.100 to 1.100	
Signal processing <sup>1)</sup>	peak hold, valley hold, average; extended hold function with threshold and hysteresis	
Certificate of calibration	optional	
Outputs/analog	channel 1	0/4 to 20 mA, 0 to 5/10 V, thermocouple J, K
Outputs/analog	optional	relays: 2 x 60 VDC/42 VAC <sub>eff</sub> ; 0.4 A; electrically isolated
Alarm output		open collector (24 V / 50 A)
Outputs/digital	optional	USB, RS232, RS485, Modbus RTU, Profibus DP, Ethernet
Output impedances	current output	mA max. 500 Ω (with 8 to 36 VDC)
	voltage output	min. 100 kΩ load impedance, thermocouple 20 Ω
Inputs		programmable functional inputs for external emissivity adjustment, ambient temperature compensation, trigger (reset of hold functions)
Cable length		3 m (standard), 8 m, 15 m
Power supply		8 to 36 VDC; max. 100 mA
Protection class		IP65 (NEMA-4)
Ambient temperature	sensor	-20 °C to 125 °C
	controller	0 °C to 85 °C
Storage temperature	sensor	-40 °C to 125 °C
	controller	-40 °C to 85 °C
Relative humidity		10 to 95 %, non-condensing
Vibration	sensor	IEC 68-2-6: 3 G, 11 to 200 Hz, any axis
Shock	sensor	IEC 68-2-27: 50 G, 11 ms, any axis
Weight		sensor: 40 g; controller: 420 g

<sup>1)</sup> adjustable via programming keys or software

<sup>2)</sup> ambient temperature: 23 ± 5 °C

<sup>3)</sup> ε = 1, response time 1 s

<sup>4)</sup> with dynamic adaptation at low signal levels



### Product identification

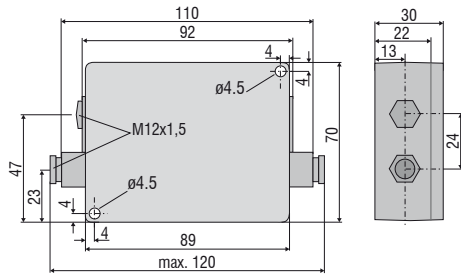
CTM-	2	SF40-	C3
Cable length [3 m (standard) / 8 m / 15 m]			
Focus [SF40 / SF75 / CF40 / CF75]			
Spectral range [2=1.6 μm]			
thermoMETER CTM			

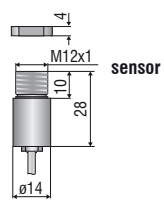
### Accessories page 20 - 23

- Protective window
- Mounting bracket / mounting bolt
- Air purge collar
- Right angle mirror
- Rail mount adapter for controller
- Massive housing
- Protective tube
- Laser sighting aid
- Digital-interface kits
- Certificate of calibration

## CT / CTfast / CTM2/M3

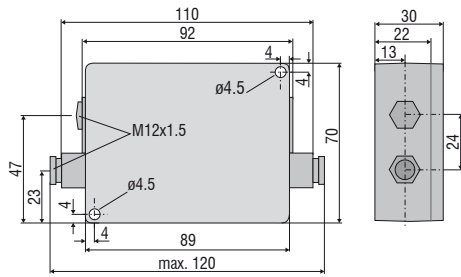
## controller



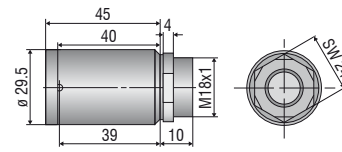
**ancillary CF lens  
(optional)**


## CThot

## controller



## sensor with protective housing



Mechanical accessories		
Art. No.	Model	
2970203	TM-FB-CT	Mounting bracket, fixed
2970325	TM-FB2-CT	Mounting bracket, adjustable in one axis, for simultaneous assembly of CT sensor and laser sighting aid
2970336	TM-FBMH-CT	Mounting bracket, adjustable in one axis, for massive housing
2970204	TM-AB-CT	Mounting bracket, adjustable in 2 axes
2970205	TM-MB-CT	Mounting bolts with M12x1 thread
2970206	TM-MG-CT	Mounting fork, adjustable in 2 axes, with M12x1 fastening
2970207	TM-AP-CT	Air purge collar for sensors from 10:1 lens
2970335	TM-APS-CT	Air purge collar for sensors from 10:1 lens made from stainless steel
2970208	TM-AP2-CT	Air purge collar for sensor with 2:1 lens
2970209	TM-APL-CT	Air purge collar, laminar
2970210	TM-APLCF-CT	Air purge collar, laminar with integrated ancillary CF lens
2970357	TM-APLCFH-CT	Air purge collar, laminar with integrated ancillary CF lens for M sensors
2970386	TM-APMH-CT	Air purge collar made from stainless steel for massive housing
2970463	TM-TAS-CT	Pivoted joint for CT sensors
2970211	TM-RAM-CT	Right angle mirror for measurements 90 °C to the sensor axis
2970212	TM-RAIL-CT	Rail mount adapter for CT controller
2970213	TM-COV-CT	Closed cover for controller
2970214	TM-MHS-CT	Massive housing made from stainless steel
2970215	TM-MHSCF-CT	Massive housing made from stainless steel with integrated ancillary CF lens
2970358	TM-MHSCFH-CT	Massive housing made from stainless steel with integrated ancillary CF lens for M sensors
2970216	TM-MHA-CT	Massive housing made from anodized aluminum
2970217	TM-MHACF-CT	Massive housing made from stainless steel with integrated ancillary CF lens
2970359	TM-MHACFH-CT	Massive housing made from anodized aluminum with integrated ancillary CF lens for M sensors
2970326	TM-PA-CT	Pipe adapter for the mounting of reflection protection tubes
2970327	TM-ST20-CT	Reflection protection tube, length 20 mm
2970328	TM-ST40-CT	Reflection protection tube, length 40 mm
2970329	TM-ST88-CT	Reflection protection tube, length 88 mm
2970221	TM-LST-CT	Laser sighting aid for CT sensors incl. batteries (2xAlkaline AA)
2970300	TM-LSTOEM-CT	OEM laser sighting aid, 635 nm, 3.5 m cable, for connection to CT controller
2970300.008	TM-LSTOEM-CT(008)	OEM laser sighting aid, 635 nm, 8 m cable, for connection to CT controller

Optical accessories		
Art. No.	Model	
2970201	TM-CF-CT	Ancillary CF lens (only for SF models)
2970202	TM-PW-CT	Protective window (only for SF models)
2970297	TM-CFAG-CT	Ancillary lens with external thread
2970330	TM-CFH-CT	Ancillary lens for M sensors
2970331	TM-CFHAG-CT	Ancillary lens with external thread for M sensors
2970299	TM-PWAG-CT	Protective window with external thread
2970332	TM-PWH-CT	Protective window for M sensors
2970333	TM-PWHAG-CT	Protective window with external thread for M sensors

Interfaces		
Art. No.	Model	
2970729	TM-USBK-CT	USB-Interface board, cable with Micro-USB plug and adapter for USB-C and USB-A, CompactConnect software (as download), Quick reference, second cable gland for controller
2970224	TM-RS232K-CT	RS232 interface: RS232 interface, computer cable, CompactConnect software, second cable gland for controller
2970338	TM-RS485USBK-CT	RS485-USB-adapter, incl. PC cable, CompactConnect software and CTmulti, second cable gland for use with interface board TM-RS485B-CT
2970226	TM-RS485B-CT	RS485-interface board incl. second cable gland
2970228	TM-PFBDPK-CT	Profibus-DPv1 interface for thermoMETER CT with plug-in connection
2970229	TM-ETHNK-CT	Ethernet-Kit: interface board, external Ethernet adapter, CompactConnect software, second cable gland
2970230	TM-RI-CT	Relay interface: two electrically isolated relays, 60 VDC/ 42 VAC <sub>eff</sub> , 0.4 A
2970719	TM-MBRTU-CT	Modbus-RTU-interface board incl. second cable gland

Calibration		
Art. No.	Model	
2970231	TM-CERT-CT	Certificate of calibration
2970310	TM-HTCERT-CT	Certificate of calibration for CTM sensors





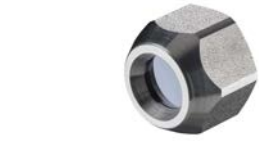
TM-FB-CT Mounting bracket, adjustable in one axis



TM-MB-CT mounting bolt with M12x1 thread adjustable in one axis



TM-AB-CT Mounting bracket, adjustable in two axes



TM-CF-CT Ancillary CF lens (only for SF models)



TM-CFAG-CT Ancillary CF lens with external thread  
TM-PWAG-CT Protective window with external thread



TM-APL-CT Air purge collar, laminar and  
TM-MG-CT Mounting fork



TM-MG-CT Mounting fork with M12x1 thread, adjustable in two axes



TM-APL-CT Air purge collar, laminar and  
TM-MG-CT Mounting fork



TM-RAIL-CT rail mount adapter for controller



TM-KF40GE-CT KF40 Flange with Ge window  
TM-KF40B270-CT KF40 Flange for CTM-1,-2,-3 with B270 window



TM-APMH-CT Air purge collar made from stainless steel for massive housing



TM-PA-CT Pipe adapter for reflection protection tube



TM-ST40-CT Reflection protection tube





TM-LST-CT Laser sighting aid, battery-operated  
(2x Alkaline AA), for alignment of CT sensors  
(dimensions identical to CT sensor)



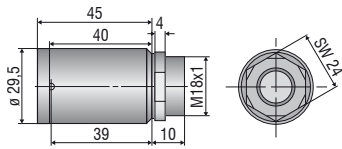
TM-FB2-CT  
Mounting bracket for sensor and laser sighting aid



TM-RAM-CT  
Right angle mirror



TM-MHS-CT Massive housing, stainless steel  
TM-MHA-CT Massive housing, aluminum



TM-TAS-CT Pivoted joint for CT sensors



Dirt and deposit on the lens like smoke, steam and high air humidity (condensation) are avoided or reduced by using an air purge collar.

TM-AP-CT  
Standard air purge collar for 10:1 / 15:1 / 22:1 lenses  
TM-APS-CT  
Air purge collar, stainless steel



TM-AP2-CT  
Standard air purge collar for 2:1 lens

## Infrared thermal imagers from Micro-Epsilon



### **thermoIMAGER TIM** Compact thermal imaging cameras for industrial temperature monitoring

- Temperature range from -20 °C to 1900 °C
- Ideal for OEM
- Real-time thermography using license-free software
- Protective housing for harsh environments
- Special variants for the glass, metal and plastics industries